



GPEX Mineral Property Portfolio

THE GREATER GRANITE CREEK GOLD GROUP

The Granite Creek Gold Camp lies within the greater Tulameen Mining District, and represents one of the older gold producing areas in the south-western interior of British Columbia. Placer gold was first discovered on the Similkameen and Tulameen Rivers in 1858, where after in 1895 placer gold was discovered on Granite Creek, creating a gold rush which lasted until 1910. Thereafter, miners gained an interest to trace the placer deposits, which generated a new wave of mining activity. Records show that hardrock prospecting commenced in the region during the late 1880's, and has sporadically carried forward with the rise and fall of precious metal prices. Since the mid 1980's, several operators have conducted trenching, drilling and Geochem programs on or around the claim area, all with good results. Yet, this property remains to be developed into a producing mine.

Tenures:

539599 - Four Deuces

558947 - Missing Link

539603 - Left Out

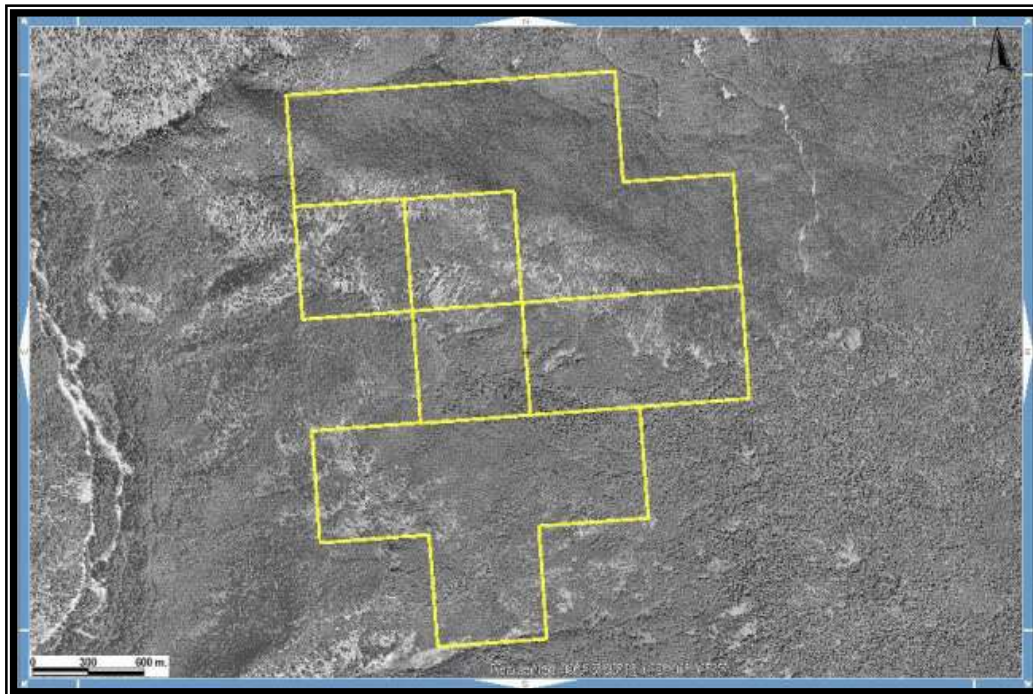
569734 - Au Extension A

544799 - Deuces Wild

613843 - Granite Creek 2

~ MISSING LINK & OTHERS ~

(AKA GD)



Scale 1:15,000

Central coordinate: 120° 41' 42" W Longitude, 49° 26' 38" N Latitude

Latest Assays

by

Jim Randa – 1998

(see attached PDF Report 26035)

- Features -

One grab sample from quartz dump-talus assayed at 67.10 g/t gold, 104 g/t silver and 1530 ppm copper.

A second grab sample assayed at 95.10 g/t gold, 37.7 g/t silver and 1800 ppm copper.

A third sample assayed at 28.65 g/t gold, 17.1 g/t silver and 470 ppm copper.

The “**Granite Creek Gold Suite,**” a compilation of six extremely-high-potential gold / copper-gold properties, collectively comprise 315.04 hectares of prime hardrock ground within the famed Granite Creek Mining Camp. These adjoining properties are situated 12 kilometers west-southwest of Princeton, B.C., in the Similkameen Mining Division. Lying on the east side of Granite Creek, access is gained via a 4-wheel-drive forestry road, leading northward from BC Hwy #3, approximately 5 km southwest of Princeton. Elevations range from 1220 metres at the western portion of the claim block, to 1780 metres on the east.

Subject to personal communication with the former operator, Jim Randa, these properties were staked due to their high incidence of precious metals, and are conducive to prospecting for approximately eight months out of the year. Mr. Randa suggested to place focus on the mineralized strike which lead southeast from the old adit area.

In 1974 the Fit Group carried out trenching work through which a quartz vein system was outlined, varying in width from two inches to four feet, and traced out for a distance of 2500 feet (Assessment Report. 5043).

The following Ministry Minfile offers a capsule summary

MINFILE No 092HSE134

SUMMARY

Name	GD, AU, FITZ	Mining Division	Similkameen
		BCGS	092H047
		Map	
Status	Prospect	NTS Map	092H07E
Latitude	<u>51° 04' 35" N</u>	UTM	10 (NAD 83)
Longitude	<u>122° 06' 05" W</u>	Northing	5479779
		Easting	562951

Commodities Au, Ag, Cu, Pb, Zinc, Antimony
M05 : Alaskan-type Pt+/-Os+/-Rh+/-

Deposit Types
L04 : Porphyry Cu +/- Mo +/- Au
L01 : Subvolcanic Cu-Ag-Au (As-Sb)

Tectonic Belt Intermontane Terrane Quesnel

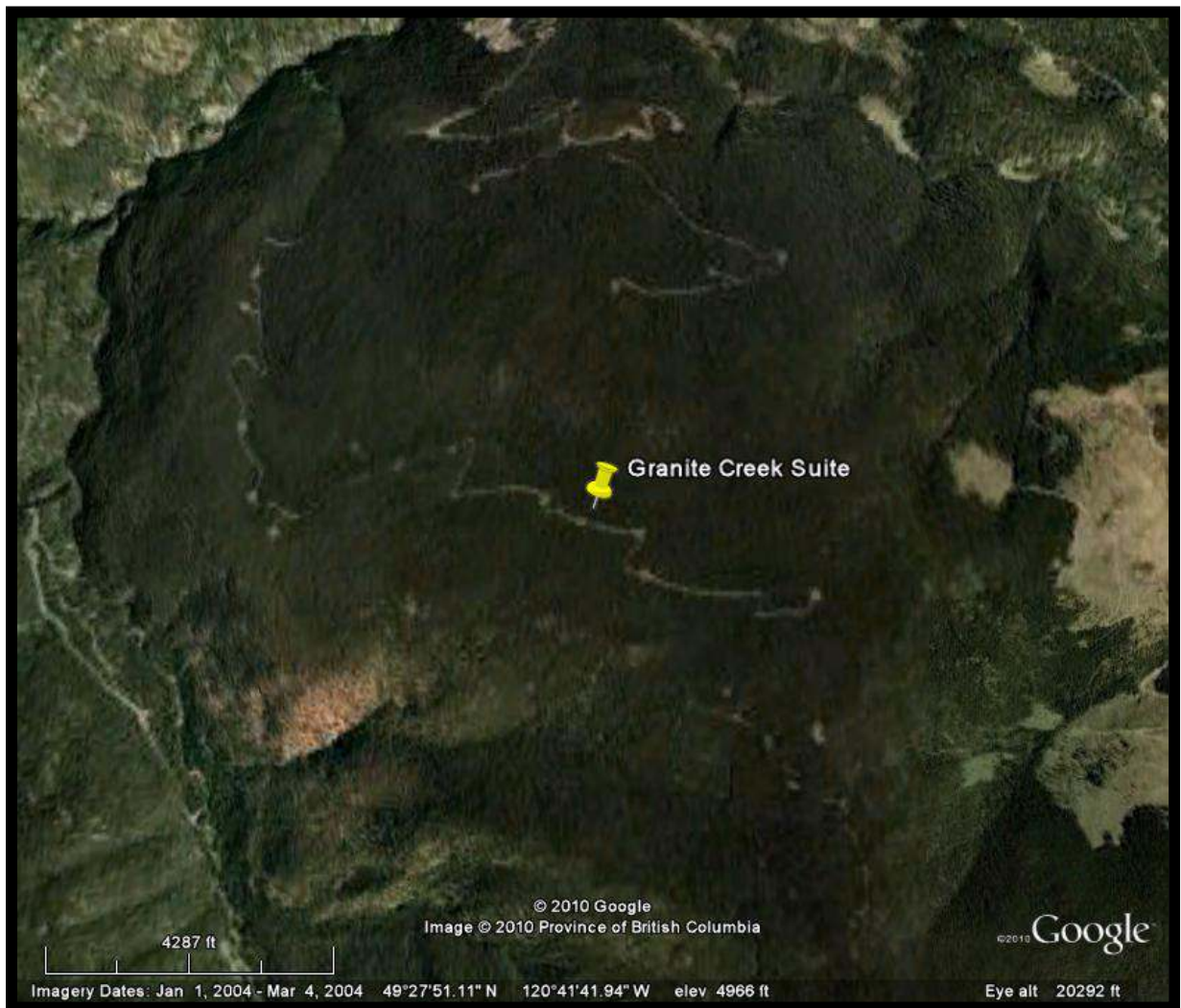
Capsule Geology The GD showing is 1.5 kilometres northeast of Granite Creek and 13.5 kilometres west-southwest of Princeton.

A small stock of fine to medium-grained gabbro intrudes a sequence of agglomerates with interbedded limestone and argillite of the Upper Triassic Nicola Group. This intrusive is possibly related to the Early Jurassic Tulameen Ultramafic Complex.

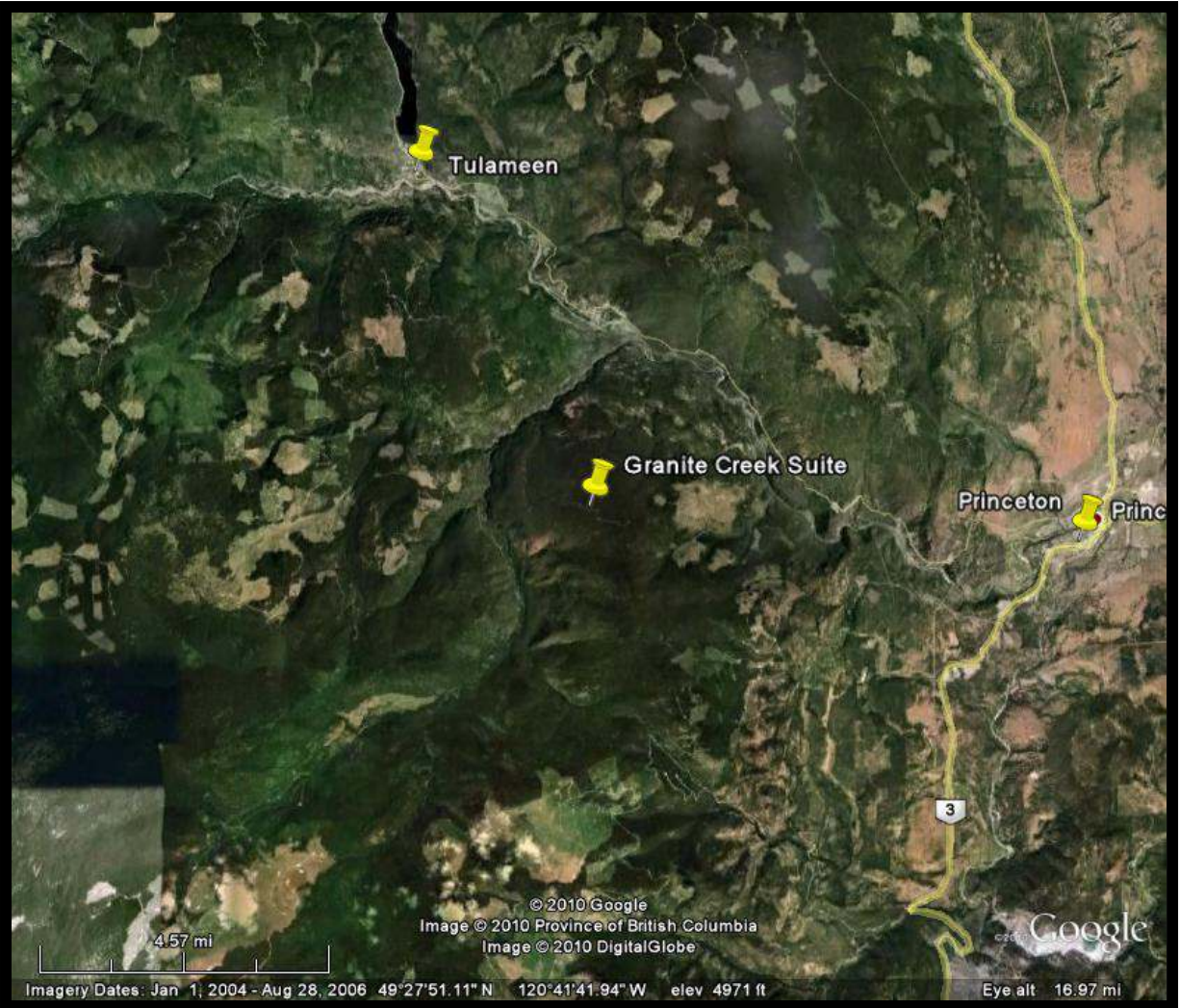
The stock is cut by a shear zone striking west-northwest. The zone is up to 6 metres wide and contains a quartz vein 0.05 to 1.2 metres wide of similar orientation. The vein is mineralized with pyrite and minor chalcopyrite, tetrahedrite and malachite. Native gold is reported to be associated with the sulphides. A channel sample from the shear zone taken in an adit across a width of 1.0 metre assayed **4.01 grams per tonne gold**, 6.5 grams per tonne silver and 0.08 per cent copper (Assessment Report 15317, page 6).

A sample from a quartz vein outcropping about 480 metres east-northeast of the adit assayed **2.15 grams per tonne gold** and 1.9 grams per tonne silver (Assessment Report 15317, page 9).

Google Earth Image of Property Area



Expanded Google Earth Image of Property Area



Sloped Google Earth Image of Property Area



Regional Google Earth Image of Property Area

